



3 Burton House Gardens, Stafford ST17 9WD  
Tel: +44 (0) 7815 149070 Fax: +44 (0) 1785 600699  
Web: [www.discoparts.com](http://www.discoparts.com) email: [sales@discoparts.com](mailto:sales@discoparts.com)

## Fitting Cruise Control to a Land Rover Discovery TD5

### Parts and Tools Required

- 1 x 13mm Ring or Open end spanner (not pictured)
- 1 x Phillips Head Screwdriver
- 1 x T30 Torx bit
- 1 x Cruise master switch (part no. YUH100370)
- 1 x Set/Resume switch (part no. YUH100320)
- 1 x Metal Bracket
- 3 x Small fixing screws



### Installation

1. Begin by disconnecting the battery earth cable using the 13mm ring spanner. Once disconnected, leave the car for at least 10 minutes to give the airbag time to discharge.



2. Inside the vehicle, insert the ignition key and turn to position 1 (accessory power). This will release the steering lock and allow you to turn the wheel.

Remove the second blanking switch up on the right-hand side of the binnacle. You should find a white multiplug attached to the back of the blank. This is for the cruise master switch.



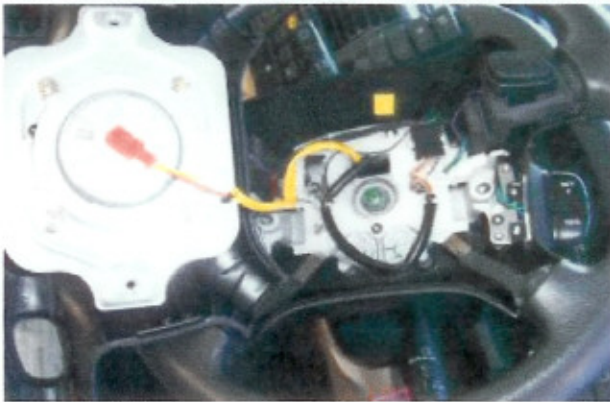
1. Turn the steering wheel 90 degrees from centre so that one of the airbag securing screws on the back of the wheel is nearest to the floor.



5. Using the Torx T27 bit, loosen the two screws. Both screws are captive so unscrew them until they feel really loose; you should then be able to lift the airbag module slowly away from the wheel.



6. The airbag module has a cable connected to it which will allow you to lift the module approx. 6". Be very careful not to pull on the module too hard, as you may tear cables or bend pins - not recommended. Turn the module to the side to allow access to the connector.



7. To remove the airbag module altogether, simply pull the red connector off the back of it - never pull the wires to unplug any connector, always pull the connector itself. Take extreme care with the module; even though it has discharged by now, it is still an explosive device.



8. The white connector inside the wheel (in the picture above, the one at the top of the wheel) is the connector for the SET/RES switches. At the right-hand side of the wheel you will note the mounting position for the switch bracket. You will need to cut a hole into the plastic trim around the wheel for the switch mounting hardware to pass through, using template supplied



9. Unfortunately, the hole needs to be quite large to let the lugs on the switch sit up neatly against the plastic. The switch has a nice big rubber gaiter so it's no big deal if the cut is slightly out.



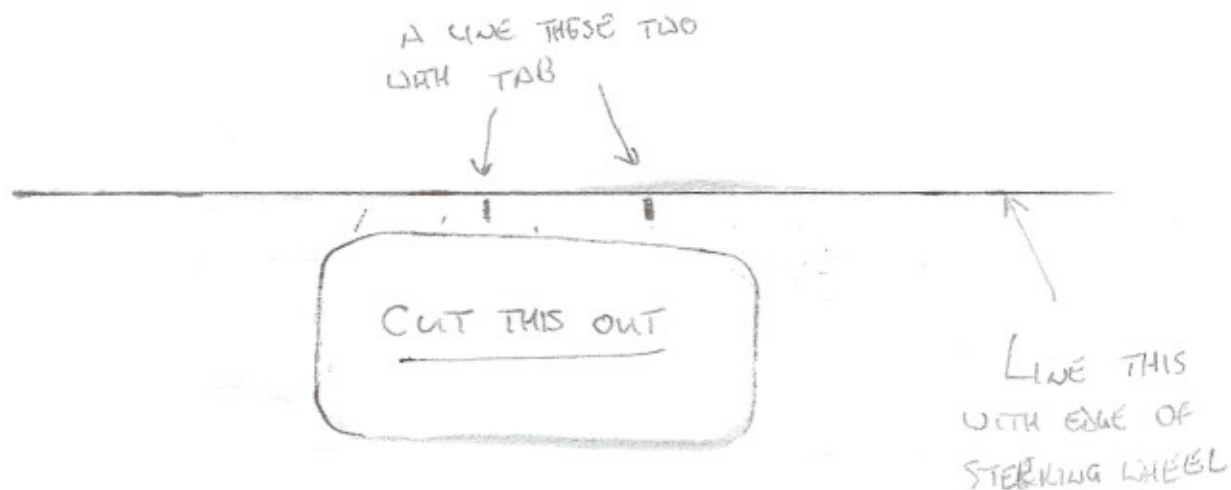
10. As you can see, the bracket that comes with the switch is vital, as is the mounting screw, as the hole for the mounting bracket has been pre-drilled and pre-tapped. You will now need to connect the switch up to the white connector mentioned earlier. Route the wiring so that it goes under the plastic holder and then connects to the plug, which sits back in its rubber holder adjacent to the horn button.



11. Once that has been fitted, re-fit the airbag module by reattaching the red connector removed previously; sit the airbag back onto the steering wheel and re-tighten the Torx bolts. They will line up, as the bolts have an angled line to them and will run into the thread in the airbag; make sure they're tight, as you don't want the airbag module itself flying off at you in an accident (you will have noticed how heavy it is!).
12. Fit the master switch by plugging in the white connector identified earlier, and then seat the switch home in its mounting location. You're done!



# TEMPLATE FOR CUTTING HOLE.



FIX THIS TO OUTSIDE OF STEERING WHEEL.